



# GourmeXpress

## User Maintenance Guide

### OPERATIONS



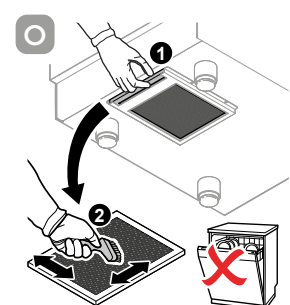
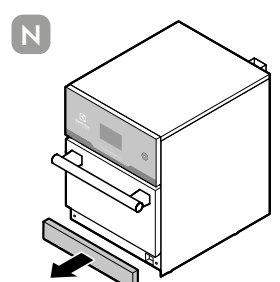
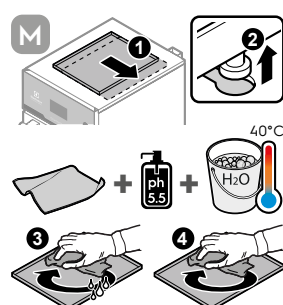
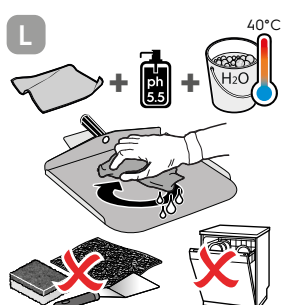
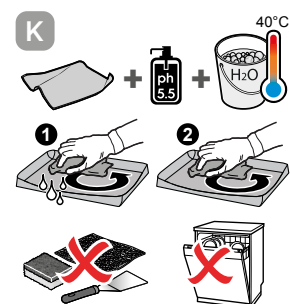
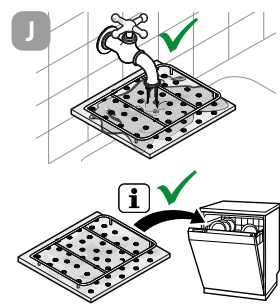
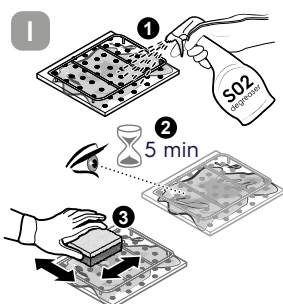
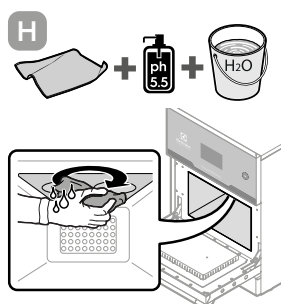
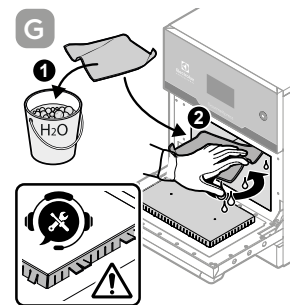
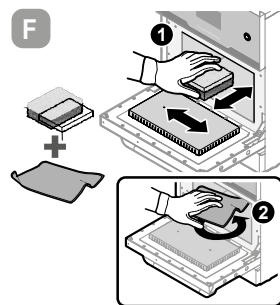
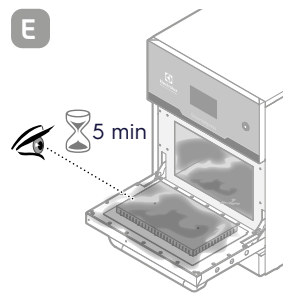
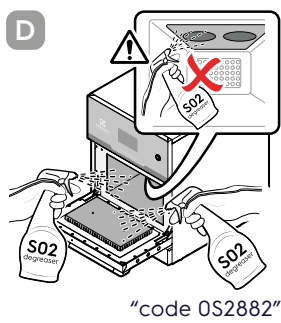
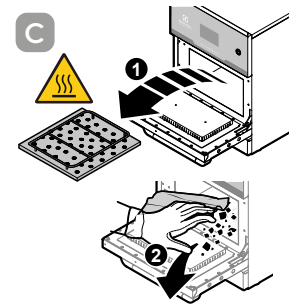
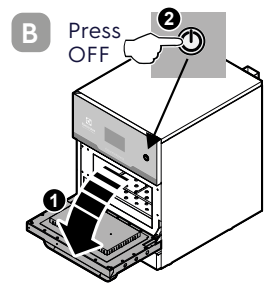
#### Cleaning operations



**A** Press to button 2 3 sec

15 min

$> 70^{\circ}\text{C}$  ✗  
 $50^{\circ}\text{C} - 70^{\circ}\text{C}$  ✓  
 $< 50^{\circ}\text{C}$  ✗



Use Electrolux Professional approved cleaning agents, rinse and descaling agents to obtain better results and maintain product efficiency over time. Damages caused by cleaning, as a consequence of use of not approved cleaning agents, rinse and descaling, will be excluded by the warranty. The operations described must be performed wearing the needed Personal Protection Equipment. Refer to the User Manual.


**TROUBLESHOOTING**

Anomaly / Description	Possible Cause	Remedy
Sparks noise is coming from the appliance during cooking cycle	<ol style="list-style-type: none"> <li>With MW cycle the food load is absent or too light</li> <li>Lack of cleanness provokes antenna effect with MW</li> </ol>	<ol style="list-style-type: none"> <li>Reduce MW time or increase the food load accordingly</li> <li>Thoroughly clean the machine</li> </ol>
The food is cold inside. The cooking result does not provide heat inside the food	The MW does not work because of the magnetrons or transformers breakage	EASY TEST: Run a MW cooking cycle: hot air should come out from the back of the machine: if no warm air coming from the back of the machine go for ACCURATE TEST: Test MW functionality with a 30s MW cycle and a glass (suitable for MW) of cold water in the cavity; if at the end of the cycle the water is still cold, call service. CAUTION: HIGH CARE WHEN CLOSING THE DOOR WITH THE GLASS INSIDE
Low temperature in the oven cavity	Oven takes more than 10min to reach 100°C	Call Service
The appliance does not switch on	<ol style="list-style-type: none"> <li>External power supply missing or interrupted</li> <li>Machine internal breakage</li> </ol>	Carefully check that the machine cable is intact and that the plug is inserted correctly into the power socket (the power socket has to be functioning). If the problem persists call service.
The appliance shuts off unexpectedly. While working, the machine switches OFF with no apparent action from the operator side	<ol style="list-style-type: none"> <li>Temporary black-out or false contacts or unintentional power interruptions.</li> <li>Fail in high voltage circuit (most frequent item: heating element)</li> </ol>	Check if the ON/OFF button is correctly pressed and if the cable plug is correctly inserted. If the anomaly persists, call service.
Flash screen / Slow screen response No screen response. It is not possible to operate through the touchscreen	Dirty glass panel, touchscreen misalignment or bad connection	Clean the screen surface. If the anomaly persists, call service.
Black screen but main switch light is ON	Door has been opened during a MW cycle	Turn the appliance OFF and turn it ON after 5min. If the anomaly persists call service.
The door does not open completely The door cannot be closed	<ol style="list-style-type: none"> <li>Foreign object limits door movement</li> <li>Potential hinge failure</li> </ol>	Check if any debris or foreign object is limiting the door movement
Too much force needed to open the door or it opens violently	Door hinge springs pulling too much	Call service
Safety thermostat trips. Appliance doesn't reach the temperature setpoint	<ol style="list-style-type: none"> <li>Overheating scenario causes safety thermostat interventions</li> <li>Fault of components</li> </ol>	Call service
Smell of burnt	Lack of cleaning or accumulation of grease/dirt/debris	Thoroughly clean the machine and increase the cleaning frequency. If the smell persists, call service
Dirty bottom air intake filter	Lack of cleaning or accumulation of grease/dirt/debris	Remove the filter and clean it. If the anomaly persists, call service
Cavity probe error (blocking machine)	Fault or disconnected temperature probe	Turn OFF and ON the appliance. If issue persists call service
Fan motor issue (blocking machine)	<ol style="list-style-type: none"> <li>Appliance has been turned ON/OFF/ON too fast</li> <li>Fault of frequency converter or motor</li> </ol>	Turn OFF and ON the appliance after a couple of min. If issue persists call service
Communication error (blocking machine)	Disconnected or damaged wire	Call service
USB malfunction	<ol style="list-style-type: none"> <li>USB pen-drive is not recognized</li> <li>Fail of internal USB connection</li> </ol>	Try to use a different USB pen-drive. If the issue persists call service
No Alarm sound	Disconnected or damaged buzzer	Turn OFF and ON the appliance after a couple of min. If issue persists call service

# GourmeXpress

Accessories & Consumables



### Aluminum baking shovel with handle

Suitable for collecting food from the oven. Lightweight and practical to use

Code	WxDxH (mm)
0CBCB8	410x300x60



### Teflon-coated mesh tray

Non-stick surface. Perforated base to maximize the bottom browning of the food. Ideal for cooking pizza, focaccia and sandwiches.

Code	WxDxH (mm)
0CBCB7	300x250x40



### Teflon-coated tray

Non-stick surface. Rigid sides prevent food from spilling over the edges. The solid bottom prevents residues from falling into the oven. Ideal for cooking chicken wings and other appetizers.

Code	WxDxH (mm)
0CBCB6	300x250x40



### Barcode scanner gun

Allows reading and sending the recipe to the GourmeXpress oven,

Code	WxDxH (mm)
0CBCB9	110x190x90



### Complete Bluetooth LP printer

(1 ribbon and 1 label roll) 100-240V KIT

Code
0PRQXR



### Black ribbon

Set of 4 pieces

Code	WxD (mm)	Length (m)
0PRQXT	50x30	30



### Start pack for tag kit printer

(4 ribbons and 9 label rolls)

Code
0PRQXS



### App LabelPrint

Available for iOS and Android systems. You can download the App by scanning the QR code in the packaging of the printer. This app contains several label templates that you can edit before printing.



### Label rolls

Set of 9 pieces

Code	WxD (mm)	Quantity
0PRQXU	50x60	200 labels per roll

# GourmeXpress

Accessories & Consumables



### S02 Degreaser for ovens and SpeedDelight

Specific for cleaning the cooking chambers of GourmeXpress, Grand Cuisine and SpeedDelight. Active up to a maximum of 50°C. Complete with spray bottle.

Code	Quantity
0S2882	Pack of 6 750ml bottles



### Plate cleaning brush

Suitable for high temperatures, removes solid residues and crumbs.

Code
0D7015



### Multipurpose brush

Universal multipurpose brush with hard bristles.

Code	Dimensions (mm)
095782	100x100x260



### Heat protection gloves

Contact resistant up to 350°C for a short period. Size 10. EN 388, EN 407, EN 420

Code
0S2985



### Microfibre cloth

for cleaning stainless steel surfaces set of 20pcs

Code
0S1779